

Support Unit FF (Supported-side round type)

Order Coding	Model No.	Surface treatment	Applicable ballscrew accuracy grade	Bearing
FF06_C7	FF06	Black Oxide	C7	606ZZ
FF06_C3			C3 C5	606ZZ
FF06_C7N		Electroless Nickel Plating	C7	606VV
FF06_C3N			C3 C5	606VV
FF10_C7	FF10	Black Oxide	C7	608ZZ
FF10_C3			C3 C5	608ZZ
FF10_C7N		Electroless Nickel Plating	C7	608DD
FF10_C3N			C3 C5	608DD
FF12_C7	FF12	Black Oxide	C7	6000ZZ
FF12_C3			C3 C5	6000ZZ
FF12_C7N		Electroless Nickel Plating	C7	6000DDU
FF12_C3N			C3 C5	6000DDU
FF15_C7	FF15	Black Oxide	C7	6002ZZ
FF15_C3			C3 C5	6002ZZ
FF15_C7N		Electroless Nickel Plating	C7	6002DDU
FF15_C3N			C3 C5	6002DDU
FF17_C7	FF17	Black Oxide	C7	6203ZZ
FF17_C3			C3 C5	6203ZZ
FF17_C7N		Electroless Nickel Plating	C7	6203DDU
FF17_C3N			C3 C5	6203DDU
FF20_C7	FF20	Black Oxide	C7	6204ZZ
FF20_C3			C3 C5	6204ZZ
FF20_C7N		Electroless Nickel Plating	C7	6204DDU
FF20_C3N			C3 C5	6204DDU
FF25_C7	FF25	Black Oxide	C7	6205ZZ
FF25_C3			C3 C5	6205ZZ
FF25_C7N		Electroless Nickel Plating	C7	6205DDU
FF25_C3N			C3 C5	6205DDU
FF30_C7	FF30	Black Oxide	C7	6206ZZ
FF30_C3			C3 C5	6206ZZ
FF30_C7N		Electroless Nickel Plating	C7	6206DDU
FF30_C3N			C3 C5	6206DDU



Black Oxide(Application : General case)



Electroless Nickel Plating(Application : Clean room)

Note:

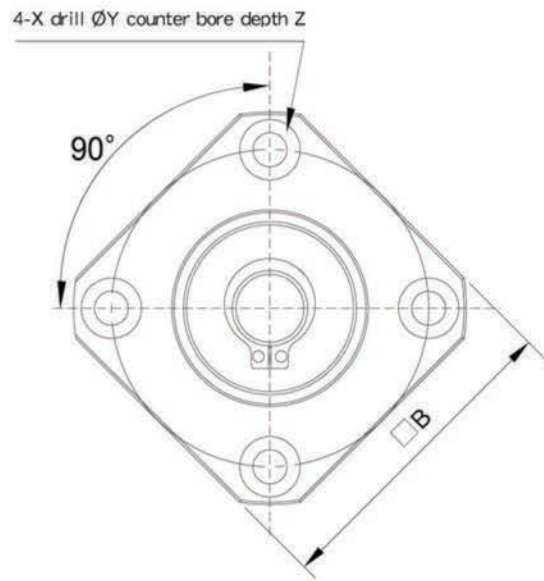
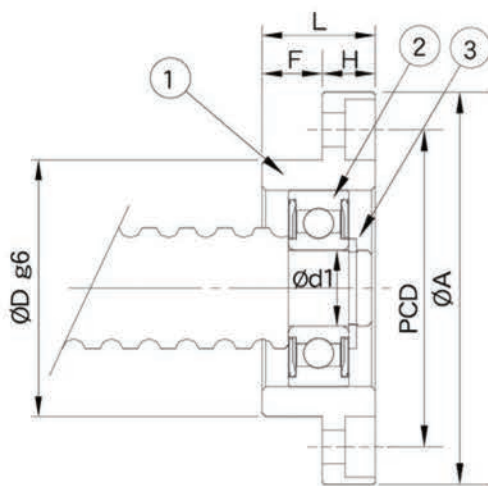
1. (It is used double pressed steel cages for Black Oxide type support units)
2. (It is used double plastic cages for Electroless Nickel Plating type support units.)

Support Unit FF (Supported-side round type)

Part No.	Part name
1	Housing
2	Bearing
3	Snap ring



FF



Unit : mm

Model No.	Shaft diameter d1	L	H	F	Dg6	A	PCD	B	X	Y	Z	Bearing	Snap ring	Weight (Kgs)
FF06	6	10	6	4	22 ^{-0.007 -0.02}	36	28	28	3.4	6.5	4	606ZZ	S 06	0.08
FF10	8	12	7	5	28 ^{-0.007 -0.02}	43	35	35	3.4	6.5	4	608ZZ	S 08	0.1
FF12	10	15	7	8	34 ^{-0.009 -0.025}	52	42	42	4.5	8	4	6000ZZ	S 10	0.15
FF15	15	17	9	8	40 ^{-0.009 -0.025}	63	50	52	5.5	9.5	5.5	6002ZZ	S 15	0.22
FF17	17	20	11	9	50 ^{-0.009 -0.025}	77	62	61	6.6	11	6.5	6203ZZ	S17	0.35
FF20	20	20	11	9	57 ^{-0.010 -0.029}	85	70	68	6.6	11	6.5	6204ZZ	S 20	0.45
FF25	25	24	14	10	63 ^{-0.010 -0.029}	98	80	79	9	14	8.5	6205ZZ	S 25	0.66
FF30	30	27	18	9	75 ^{-0.010 -0.029}	117	95	93	11	17	11	6206ZZ	S 30	1.05