

Support Unit BF (Supported-side rectangular type)

Order Coding	Model No.	Surface treatment	Applicable ballscrew accuracy grade	Bearing
BF10_C7	BF10	Black Oxide	C7	608ZZ
BF10_C3			C3 C5	608ZZ
BF10_C7N		Electroless Nickel Plating	C7	608DD
BF10_C3N			C3 C5	608DD
BF12_C7	BF12	Black Oxide	C7	6000ZZ
BF12_C3			C3 C5	6000ZZ
BF12_C7N		Electroless Nickel Plating	C7	6000DDU
BF12_C3N			C3 C5	6000DDU
BF15_C7	BF15	Black Oxide	C7	6002ZZ
BF15_C3			C3 C5	6002ZZ
BF15_C7N		Electroless Nickel Plating	C7	6002DDU
BF15_C3N			C3 C5	6002DDU
BF17_C7	BF17	Black Oxide	C7	6203ZZ
BF17_C3			C3 C5	6203ZZ
BF17_C7N		Electroless Nickel Plating	C7	6203DDU
BF17_C3N			C3 C5	6203DDU
BF20_C7	BF20	Black Oxide	C7	6004ZZ
BF20_C3			C3 C5	6004ZZ
BF20_C7N		Electroless Nickel Plating	C7	6004DDU
BF20_C3N			C3 C5	6004DDU
BF25_C7	BF25	Black Oxide	C7	6205ZZ
BF25_C3			C3 C5	6205ZZ
BF25_C7N		Electroless Nickel Plating	C7	6205DDU
BF25_C3N			C3 C5	6205DDU
BF30_C7	BF30	Black Oxide	C7	6206ZZ
BF30_C3			C3 C5	6206ZZ
BF30_C7N		Electroless Nickel Plating	C7	6206DDU
BF30_C3N			C3 C5	6206DDU
BF35_C7	BF35	Black Oxide	C7	6207ZZ
BF35_C3			C3 C5	6207ZZ
BF35_C7N		Electroless Nickel Plating	C7	6207DDU
BF35_C3N			C3 C5	6207DDU
BF40_C7	BF40	Black Oxide	C7	6208ZZ
BF40_C3			C3 C5	6208ZZ
BF40_C7N		Electroless Nickel Plating	C7	6208DDU
BF40_C3N			C3 C5	6208DDU



Black Oxide: (Application: General case)



Electroless Nickel Plating
(Application: Clean room)

Note:

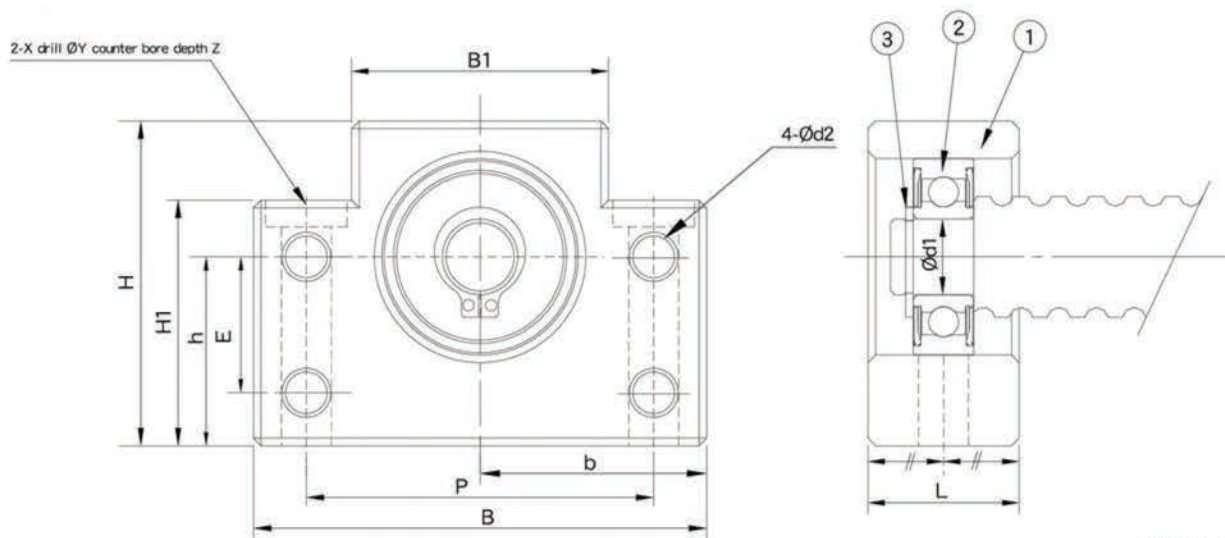
1. (Is it used double pressed steel cages for Black Oxide type support units.
2. (It is used double plastic cages for Electroless Nickel Plating type support units.

Support Unit BF (Supported-side rectangular type)



Park No.	Part name
1	Housing
2	Bearing
3	Snap ring

BF



Unit : mm

Model No.	Shaft diameter d1	L	B	H	b ±0.02	h ±0.02	B1	H1	E	P	d2	X	Y	Z	Bearing	Snap ring	Weight (Kgs)
BF10	8	20	60	39	30	22	34	32.5	15	46	5.5	6.6	10.8	5	608ZZ	S 08	0.3
BF12	10	20	60	43	30	25	34	32.5	18	46	5.5	6.6	10.8	1.5	6000ZZ	S 10	0.35
BF15	15	20	70	48	35	28	40	38	18	54	5.5	6.6	11	6.5	6002ZZ	S 15	0.4
BF17	17	23	86	64	43	39	50	55	28	68	6.6	9	14	8.5	6203ZZ	S 17	0.75
BF20	20	26	88	60	44	34	52	50	22	70	6.6	9	14	8.5	6004ZZ	S 20	0.77
BF20H	20	26	88	74	44	48	52	64	-	70	-	9	14	8.5	6004ZZ	S20	1.017
BF25	25	30	106	80	53	48	64	70	33	85	9	11	17	11	6205ZZ	S 25	1.45
SF25	25	32	128	89	64	51	76	78	-	102	-	14	20	13	6205ZZ	S 25	-
BF30	30	32	128	89	64	51	76	78	33	102	11	14	20	13	6206ZZ	S 30	1.95
BF35	35	32	140	96	70	52	88	79	35	114	11	14	20	13	6207ZZ	S 35	2.25
SF40	40	32	140	96	70	52	88	79	-	114	-	14	20	13	6208ZZ	S 40	-
BF40	40	37	160	110	80	60	100	90	37	130	14	18	26	17.5	6208ZZ	S 40	3.3