

Support Unit BK (fixed-side rectangular type)

| Order Coding | Model No. | Surface treatment | Applicable ballscrew accuracy grade | Bearing | |
|--------------|-----------|----------------------------|-------------------------------------|-----------|------------------------------|
| | | | | Model No. | Max. Starting torque (gf-cm) |
| BK10 | BK10 | Black Oxide | C3~C10 | 7000A P5 | 190 |
| BK10_C5 | | | C5 | 7000A P0 | 190 |
| BK10_C3 | | | C3 | 7000A P5 | 190 |
| BK10_N | | Electroless Nickel Plating | C3~C10 | 7000A P5 | 190 |
| BK10_C5N | | | C5 | 7000A P0 | 190 |
| BK10_C3N | | | C3 | 7000A P5 | 190 |
| BK12 | BK12 | Black Oxide | C3~C10 | 7001A P5 | 210 |
| BK12_C5 | | | C5 | 7001A P0 | 210 |
| BK12_C3 | | | C3 | 7001A P5 | 210 |
| BK12_N | | Electroless Nickel Plating | C3~C10 | 7001A P5 | 210 |
| BK12_C5N | | | C5 | 7001A P0 | 210 |
| BK12_C3N | | | C3 | 7001A P5 | 210 |
| BK15 | BK15 | Black Oxide | C3~C10 | 7002A P5 | 230 |
| BK15_C5 | | | C5 | 7002A P0 | 230 |
| BK15_C3 | | | C3 | 7002A P5 | 230 |
| BK15_N | | Electroless Nickel Plating | C3~C10 | 7002A P5 | 230 |
| BK15_C5N | | | C5 | 7002A P0 | 230 |
| BK15_C3N | | | C3 | 7002A P5 | 230 |
| BK17_C5 | BK17 | Black Oxide | C5 | 7203A P0 | 370 |
| BK17_C3 | | | C3 | 7203A P5 | 370 |
| BK17_C5N | | Electroless Nickel Plating | C5 | 7203A P0 | 370 |
| BK17_C3N | | | C3 | 7203A P5 | 370 |
| BK20_C5 | BK20 | Black Oxide | C5 | 7004A P0 | 380 |
| BK20_C3 | | | C3 | 7004A P5 | 380 |
| BK20_C5N | | Electroless Nickel Plating | C5 | 7004A P0 | 380 |
| BK20_C3N | | | C3 | 7004A P5 | 380 |

(Note) :

1. (All types make Preload.)

2. (All of bearings use Japanese & Taiwanese brand bearings(Model No. in blue), Assembly by DF way. The most suitable way for ballscrew use.)

3. (The standard type is without Q , if required,please advise in advance.)



Support Unit BK (fixed-side rectangular type)

| Order Coding | Model No. | Surface treatment | Applicable ballscrew accuracy grade | Bearing | |
|--------------|-----------|----------------------------|-------------------------------------|-----------|-----------------------------|
| | | | | Model No. | Max Starting torque (gf-cm) |
| BK25_C5 | BK25 | Black Oxide | C5 | 7205A P0 | 730 |
| BK25B_C5 | | | C5 | 7205B P0 | 1000 |
| BK25_C3 | | | C3 | 7205A P5 | 730 |
| BK25_C5N | | Electroless Nickel Plating | C5 | 7205A P0 | 730 |
| BK25B_C5N | | | C5 | 7205B P0 | 1000 |
| BK25_C3N | | | C3 | 7205A P5 | 730 |
| BK30_C5 | BK30 | Black Oxide | C5 | 7206A P0 | 1050 |
| BK30B_C5 | | | C5 | 7206B P0 | 1250 |
| BK30_C3 | | | C3 | 7206A P5 | 1050 |
| BK30_C5N | | Electroless Nickel Plating | C5 | 7206A P0 | 1050 |
| BK30B_C5N | | | C5 | 7206B P0 | 1250 |
| BK30_C3N | | | C3 | 7206A P5 | 1050 |
| BK35_C5 | BK35 | Black Oxide | C5 | 7207B P0 | 1320 |
| BK35_C5N | | Electroless Nickel Plating | C5 | 7207B P0 | 1320 |
| BK40_C5 | BK40 | Black Oxide | C5 | 7208B P0 | 2050 |
| BK40_C5N | | Electroless Nickel Plating | C5 | 7208B P0 | 2050 |

(Note) :

1. (All types make Preload.)

2. (All of bearings use Japanese & Taiwanese brand bearings. Assembly by DF way. The most suitable way for ballscrew use.)

3. (The standard type is without Q, if required, please advise in advance.)

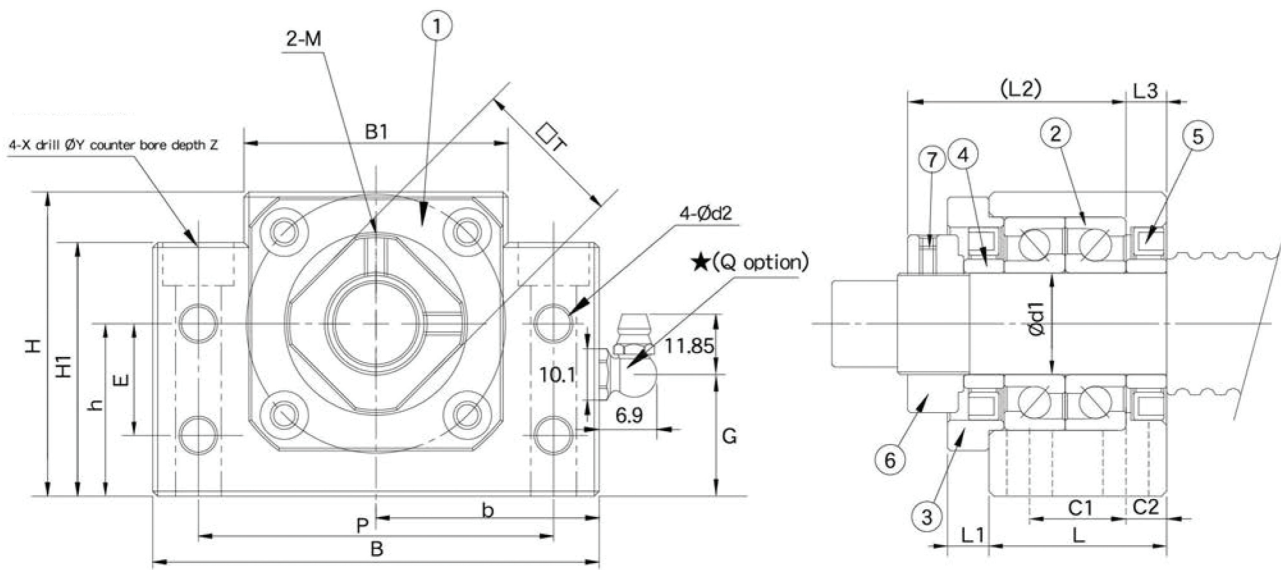


Support Unit BK (fixed-side rectangular type)



| Park No. | Part name |
|----------|------------------------------|
| 1 | Housing |
| 2 | Bearing |
| 3 | Holding lid |
| 4 | Collar |
| 5 | Seal |
| 6 | Lock nut |
| 7 | Hexagon socket-head Setscrew |

BK



Unit : mm

| Model No. | Shaft diameter d1 | L | L1 | L2 | L3 | B | H | b ±0.02 | h ±0.02 | B1 | H1 | E | P | C1 | C2 | d2 | X | Y | Z | M | T | G | Q | Weight (Kgs) |
|-----------|----------------------|----|----|------|----|-----|-----|------------|------------|-----|------|----|-----|----|----|-----|-----|------|------|----|----|----|----|-----------------|
| BK10 | 10 | 25 | 5 | 29.5 | 5 | 60 | 39 | 30 | 22 | 34 | 32.5 | 15 | 46 | 13 | 6 | 5.5 | 6.6 | 10.8 | 5 | M3 | 16 | 15 | M6 | 0.4 |
| BK12 | 12 | 25 | 5 | 29.5 | 5 | 60 | 43 | 30 | 25 | 34 | 32.5 | 18 | 46 | 13 | 6 | 5.5 | 6.6 | 10.8 | 1.5 | M4 | 19 | 18 | M6 | 0.45 |
| BK15 | 15 | 27 | 6 | 32 | 6 | 70 | 48 | 35 | 28 | 40 | 38 | 18 | 54 | 15 | 6 | 5.5 | 6.6 | 11 | 6.5 | M4 | 22 | 18 | M6 | 0.6 |
| BK17 | 17 | 35 | 9 | 44 | 7 | 86 | 64 | 43 | 39 | 50 | 55 | 28 | 68 | 19 | 8 | 6.6 | 9 | 14 | 8.5 | M4 | 24 | 30 | M6 | 1.3 |
| BK20 | 20 | 35 | 8 | 43 | 8 | 88 | 60 | 44 | 34 | 52 | 50 | 22 | 70 | 19 | 8 | 6.6 | 9 | 14 | 8.5 | M4 | 30 | 24 | M6 | 1.3 |
| BK25 | 25 | 42 | 12 | 54 | 9 | 106 | 80 | 53 | 48 | 64 | 70 | 33 | 85 | 22 | 10 | 9 | 11 | 17 | 11 | M5 | 35 | 37 | M6 | 2.4 |
| BK30 | 30 | 45 | 14 | 61 | 9 | 128 | 89 | 64 | 51 | 76 | 78 | 33 | 102 | 23 | 11 | 11 | 14 | 20 | 13 | M6 | 40 | 37 | M6 | 3.4 |
| BK35 | 35 | 50 | 14 | 67 | 12 | 140 | 96 | 70 | 52 | 88 | 79 | 35 | 114 | 26 | 12 | 11 | 14 | 20 | 13 | M8 | 50 | 37 | M6 | 4.4 |
| BK40 | 40 | 61 | 18 | 76 | 15 | 160 | 110 | 80 | 60 | 100 | 90 | 37 | 130 | 33 | 14 | 14 | 18 | 26 | 17.5 | M8 | 50 | 43 | M6 | 6.8 |