



## AUTOMOTIVE CLUTCH RELEASE BEARINGS

LAST UPDATE : 2006.12.13

クラッチリリース軸受



MALEX CORPORATION LIMITED

[www.malexbearing.com](http://www.malexbearing.com)

MB

ME

MT

PA

PB

PC

PD

PH

PJ

PT

PU

PZ

KA

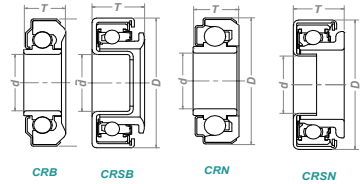
# MALEX MOTION PTE LTD

Singapore - Distribution and Logistic center of Malex Co.,Ltd (Japan)

Tel : 065-6297 3328 F : 065-6297 5393 Email : enquiry@malexbearing.com



## クラッチリリース軸受



## MALEX® AUTOMOTIVE CLUTCH RELEASE BEARINGS (W/O SLEEVE)

d	D	T	Part No.	Ctn	For Reference Only			
33	60	17	<b>CRB 3360-2</b>	125	RCTS3360	33TKD03	SF0743	33TRBC10
35	56	15	<b>CRB 3556-1</b>		RCT35-1	35TMK29B	SF0721	35TRK-1
37	66	21	<b>CRSB 3766-1</b>	98	RCT37SA1	48TKA3214		
38.1	67	16	<b>CRB 3867-1</b>	125	RCT38S	24TK308B2	SF0816	BC12S4
	67	16	<b>CRN 3867-4</b>	125	CT38-1L1	24TK308E		BC12S
40	67	20	<b>CRB 4067-3</b>	98	RCTS4067	40TKD07	SF0859	40TRBC07
	75	19	<b>CRB 4075-1</b>	92	RCT4075-1	TK40-4A	SF0820	40TRK-1
	82	23	<b>CRSB 4083-1</b>	60	RCT401SA	54TKA3501		
42	82	19	<b>CRSB 4282-1</b>	60	RCT422SA	60TKC4202		
45	73	16	<b>CRN 4574-1</b>	100	CT45-1S	TK45-4	45TMK804	
	74	18	<b>CRB 4574-5</b>	100	RCT45-4S	TK45-4B	SF0914	45TMK-1
	76	23	<b>CRB 4576-2</b>	68	RCT4500	45TKD07	SF0940	
	77	19	<b>CRN 4577-4</b>	68	45TNK20			
47	82	24	<b>CRSB 4782-1</b>	60	RCT473SA			
55	86	19	<b>CRN 5586-1</b>		CT5586	SF1135	SF1135	
	88	19	<b>CRN 5588-3</b>		CT55BL1	TK55-1A	55TMK804	VKC3514
	88	22	<b>CRB 5588-7</b>	46	RCT55B	TK55-1B		

Dimension in this range may be adjusted to nearest integer for easy reference

℞ New added item ● MOQ require ◎ Special Tolerance ● Refer to Special Dimension ● Upgraded Sealed Design

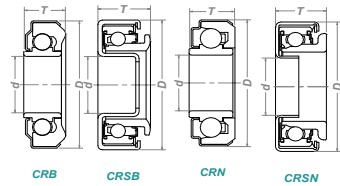
# MALEX MOTION PTE LTD

Singapore - Distribution and Logistic center of Malex Co.,Ltd (Japan)

Tel : 065-6297 3328 F : 065-6297 5393 Email : enquiry@malexbearing.com



## クラッチリリース軸受



## MALEX® AUTOMOTIVE CLUTCH RELEASE BEARINGS (W/O SLEEVE)

<i>d</i>	<i>D</i>	<i>T</i>	Part No.	Ctn	For Reference Only			
60	97	22	<b>CRN 6097-1</b>		60TMK20			
62	97	22	<b>CRN 6297-1</b>		62TMK20-1			
63.5	103	22	<b>CRN 6410-1</b>	41	CT1310	63TNK002	SF1313	411306B
65	102	22	<b>CRN 6510-1</b>	41	65TNK20	65TNK20	65TNK20	65TNK20
70	116	27	<b>CRN 7011-1</b>		CT70B	TK70-1A	SF1412	

Dimension in this range may be adjusted to nearest integer for easy reference

☐ New added item   ● MOQ require   ● Special Tolerance   ● Refer to Special Dimension   ● Upgraded Sealed Design

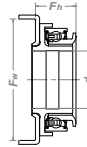
# MALEX MOTION PTE LTD

Singapore - Distribution and Logistic center of Malex Co.,Ltd (Japan)

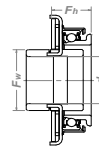
Tel : 065-6297 3328 F : 065-6297 5393 Email : enquiry@malexbearing.com



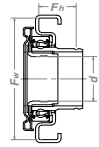
## クラッチリリース軸受



CBU... (A~J)




CBU... (T~W)



CBU... (X~Z)

## MALEX ® AUTOMOTIVE CLUTCH RELEASE BEARINGS (WITH SLEEVE)

d	Fw	Fh	Part No.	Ctn	For Reference Only		
28	35	22	<b>CBU 28361 AC1</b>	91	44SCRN28		
	44	22	<b>CBU 28446 HC1</b>	60	CBU442822		
29	38	21	<b>CBU 29344 C</b>		47SCRN34K6		
30	45	20	 <b>CBU 30401 A</b>		47TKB3001		
31	54	23	<b>CBU 31502 B</b>		FCR55-5		
	68	23	 <b>CBU 31614 A</b>		47TKB3102A	47SCRN40P	
32	40	25	<b>CBU 32401 AC1</b>		60TKZ3201		
	40	38	<b>CBU 32444 AC1</b>	20	48TKB3204		
	46	27	<b>CBU 32427 B</b>	40	RCTS325SA	FCR55-17-11	
	46	32	<b>CBU 32441 A</b>	46	RCTS324SA	FCR55-1	
	60	21	<b>CBU 32600 AC1</b>		RCT322SA	48TKA3201	48SCRN32K
33	42	23	<b>CBU 33427 A</b>	60	FCR48-39		
	68	12	<b>CBU 33625 AL1</b>	60	RCTS33SA3	48TKB3302	
	68	13	<b>CBU 33609 AL1</b>	60	62TKA3309	FCR62-5	
	68	20	<b>CBU 33632 AL1</b>	40	FCR62-32		
	68	22	<b>CBU 33634 AL1</b>		FCR48-24-5		
	68	24	<b>CBU 33629 AL1</b>		FCR62-29		
	70	22	<b>CBU 33712 A</b>		RCTS338SA1		
	70	22	<b>CBU 33722 DC1</b>	60	RCT337SA3	50TKB3301	50SCRN31P
	70	25	<b>CBU 33706 A</b>		RCT331SA1	FCR50-17-8	
	77	25	<b>CBU 33702 B</b>		RCT336SA	FCR50-1-3	
	79	22	<b>CBU 33731 DC1</b>	40	50SCRN31P4	VKC3622	
	95	25	<b>CBU 33905 X</b>		FCR54-60		

Dimension in this range may be adjusted to nearest integer for easy reference

 New added item  MOQ require  Special Tolerance  Refer to Special Dimension  Upgraded Sealed Design

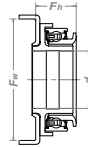
# MALEX MOTION PTE LTD

Singapore - Distribution and Logistic center of Malex Co.,Ltd (Japan)

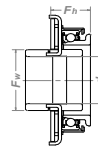
Tel : 065-6297 3328 F : 065-6297 5393 Email : enquiry@malexbearing.com



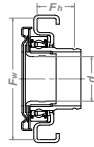
## クラッチリリース軸受



CBU...(A~J)



CBU...(T~W)



CBU...(X~Z)

## MALEX® AUTOMOTIVE CLUTCH RELEASE BEARINGS (WITH SLEEVE)

d	Fw	Fh	Part No.	Ctn	For Reference Only		
35	44	24	<b>CBU 35401 AC1</b>		50TKB3501	50SCRN34	
	44	27	 <b>CBU 35437 AC1</b>		58TKB3505	58SCRN37P	
	44	30	<b>CBU 35404 AC1</b>		RCT3565A6	50TKB3505	50SCRN40
	44	30	<b>CBU 35434 AC1</b>		68TKB3506		
	44	33	 <b>CBU 35403 AC1</b>		68TKP3503	68SCRN43A	
	44	34	<b>CBU 35409 AC1</b>		RCT3565A9	50TKB3504	50SCRN44
	57	34	<b>CBU 35505 AK1</b>		RCTS3555A	FCR54-15	
	77	27	 <b>CBU 35741 A</b>		FCR50-41-2		
	79	25	<b>CBU 35715 HC1</b>		RCT3585A2	60TKB3506	60SCRN31P6
36	77	25	<b>CBU 36738 A</b>		RCT3635A	FCR54-46	
37	56	31	<b>CBU 37500 AC1</b>		RCTS3715A	58TKA3703	
	100	31	 <b>CBU 37101 A</b>		Hyundai H100		
38	48	36	<b>CBU 38400 AC1</b>		68SCRN46P2		
	48	48	<b>CBU 38402 AC1</b>	12	68SCRN58P5		
	48	53	<b>CBU 38404 AC1</b>	12	68TKB3802		
40	52	32	<b>CBU 40501 TC1</b>		78TKL4001		
47	68	57	<b>CBU 47608 A</b>	12	RCT4700SA		

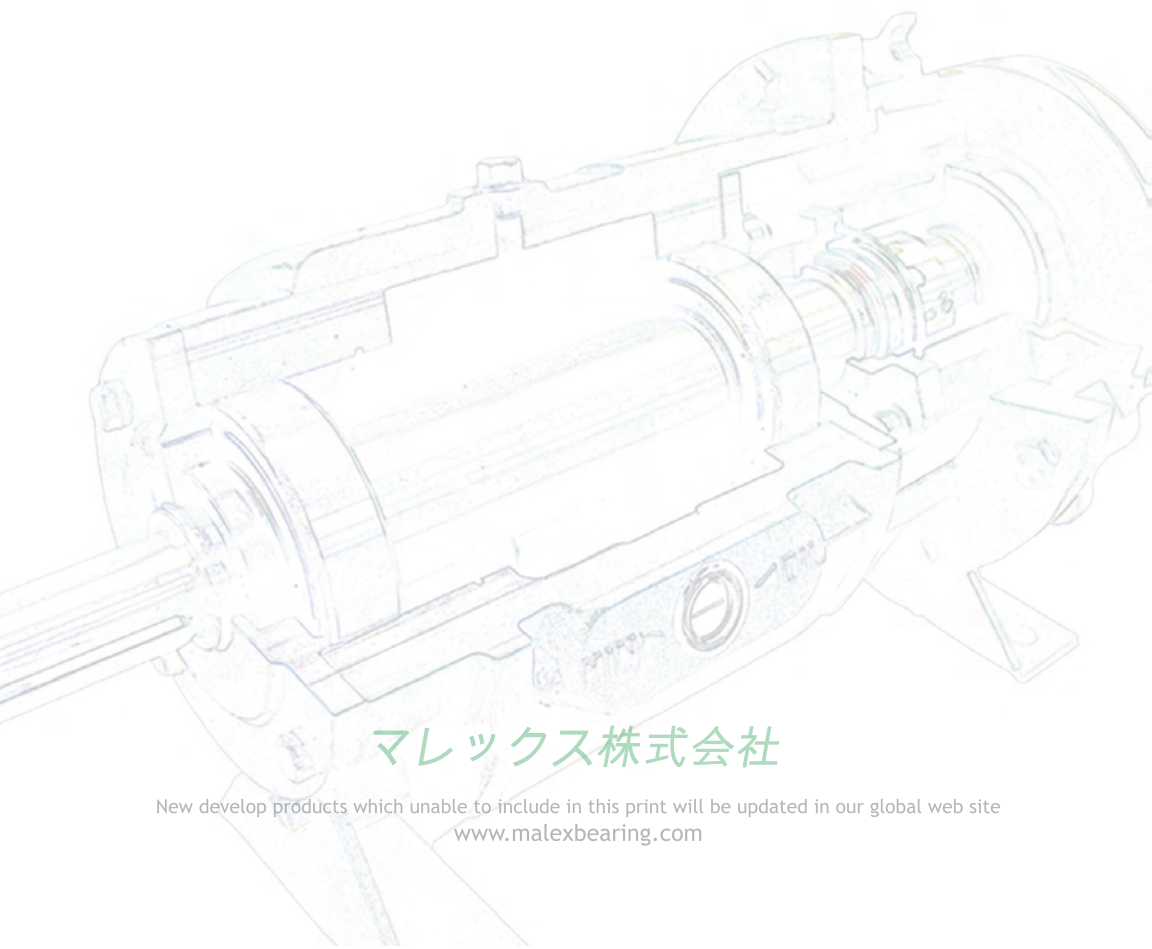
Dimension in this range may be adjusted to nearest integer for easy reference

 New added item  MOQ require  Special Tolerance  Refer to Special Dimension  Upgraded Sealed Design

*MALEX Develop*



*Factor*



マレックス株式会社

New develop products which unable to include in this print will be updated in our global web site  
[www.malexbearing.com](http://www.malexbearing.com)