



Correspondance des paliers auto-aligneurs SNR

Comparsion list
Vergleichsliste
Lista de la comparación
Tabella di comparazione
Lista da comparação

SNR - Industry





Sommaire

Page

Contents

Inhalt

Contenido

Sommario

Conteúdo

Paliers auto-aligneurs en fonte grise Grey cast iron housings Grauguss Gehäuselager Gamma de soportes auto-alineantes Supporti con corpo in ghisa Gama de mancais auto-alinháveis	3-6
Paliers auto-aligneurs en tôle d'acier Stamped steel housings Stahlblech Gehäuselager Soportes de chapa Supporti in lamiera d'acciaio Mancais em chapa de aço	7
Paliers auto-aligneurs en acier inoxydable Stainless steel ball bearing units Nichtrostende Gehäuselager Soportes en acero inoxidable Supporti in acciaio inox Mancais em aço inoxidável	8
Paliers auto-aligneurs thermoplastiques Thermoplastic self-aligning bearing units Thermoplastik Gehäuselager Soportes autoalineantes termoplásticos Supporti termoplastici Mancais termoplásticos	9
Roulements-inserts Bearing inserts Lagereinsätze Rodamientos Cuscinetti per supporti Rolamento de chumaceira	10

(F)

Le tableau donne seulement des informations sur des formes comparables, il ne garantit pas une interchangeabilité exacte sur le plan dimensionnel.

(GB)

The table gives only information on comparable designs, not however on exact redundant dimensioning.

(D)

Die Tabelle gibt lediglich Auskunft über vergleichbare Bauformen, nicht jedoch über die exakte maßliche Austauschbarkeit.

(E)

La tabella fornisce unicamente informazioni sulle forme costruttive paragonabili, non sull'eventuale intercambiabilità.

(I)

La tabla da solamente información sobre diseños funcionalmente equivalentes pero no intercambiables dimensionalmente.

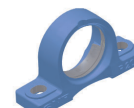
(P)

A tabela dá informações exclusivamente sobre desenhos funcionalmente equivalentes e não dimensionalmente idênticos.

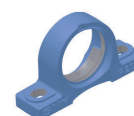
- (F) Paliers auto-aligneurs en fonte grise
 (GB) Grey cast iron housings
 (D) Grauguss Gehäuselager
 (E) Gamma de soportes auto-alineantes
 (I) Supporti con corpo in ghisa
 (P) Gama de mancais auto-alinháveis

**PE**

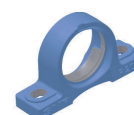
SNR	UCPE	USPE	UKPE..H	EXPE	ESPE
INA	RASEY	PASEY	-	RASE..N	PASE..N
SKF	SY..TF	-	SYJ..KF	SY..WF	SY..FM

**PLE**

SNR	UCPLE	USPLE	UKPLE..H	EXPLE	ESPLE
RHP	SL	-	-	-	SL..EC

**P**

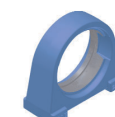
SNR	UCP	USP	UKP..H	EXP	ESP
NSK	UCP	-	UKP..+H23..	EWP	ENP
ASAHI	UCP	-	UKP..+H23..	-	-
NTN	UCP..D1	-	UKP..D1,H23..X	UEL..D1W3	-
KOYO	UCP	-	UKP	NAP..M	SA...M

**PH**

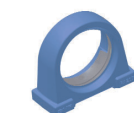
SNR	UCPH	USPH	UKPH..H	EXPH	ESPH
INA	RTUEY	-	-	-	-
NSK	UCPH	-	UKPH..+H23..	-	-
ASAHI	UCPH	-	-	-	-
NTN	UCHP..D1	-	-	UELHP..D1W3	-
KOYO	UCPH	-	-	-	-

**PAE**

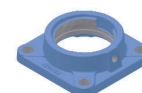
SNR	UCPAE	USPAE	UKPAE..H	EXPAE	ESPAE
INA	RSHEY	PSHEY	-	RSHE..N	PSHE..N
SKF	SYF..TF	-	-	-	SYF..FM
RHP	SNP	SNP..A	-	SNP..DEC	SNP..EC

**PA**

SNR	UCPA	USPA	UKPA..H	EXPA	ESPA
NSK	UCPA	UBPA	-	EWPA	-
NTN	UCUP..D1	-	-	UELUP..D1W3	-
ASAHI	UCPA	-	-	-	-
KOYO	UCPA	-	-	-	-

**FE**

SNR	UCFE	USFE	UKFE..H	EXFE	ESFE
INA	RCJY	PCJY	-	RCJ..N	PCJ..N
SKF	FY..TF	-	FYJ..KF	FY..WF	FY..FM
RHP	SF	SF.. A	MSF..K	SF..DEC	SF..EC



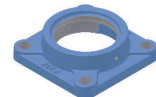


(F) Paliers auto-aligneurs en fonte grise
 (GB) Grey cast iron housings
 (D) Grauguss Gehäuselager
 (E) Gamma de soportes auto-alineantes
 (I) Supporti con corpo in ghisa o lamiera d'acciaio
 (P) Gama de mancais auto-alinháveis



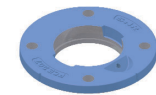
F

SNR	UCF	USF	UKF..H	EXF	ESF
NSK	UCF	-	UKF..H23..	EWf	-
ASAHI	UCF	-	UKF..H232..	-	-
NTN	UCF..D1	-	UKF..D1,H23..X	UELF..D1W3	-
KOYO	UCF	-	UKF	-	SAF..FM



FCE

SNR	UCFCE	USFCE	UKFCE..H	EXFCE	ESFCE
INA	RMEY	PMEY	-	RME	PME
RHP	FC	FC..A	-	FC..DEC	FC..EC



FC

SNR	UCFC	USFC	UKFC..H	EXFC	ESFC
SKF	FYC..TF	-	-	FYC..WF	FYC..FM
NSK	UCFC	-	UKFC..+ H23..	EWFC	-
ASAHI	UCFC	-	UKFC.. +H	-	KHFC
NTN	UCFC..D1	-	UKFC..D1,H23..X	UELF..D1W3	-
KOYO	UCFC	-	UKFC	-	-



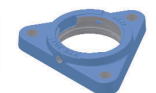
FEE

SNR	-	USFEE	-	-	ESFEE
INA	-	-	-	RFE	-



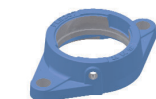
FTE

SNR	-	USFTE	-	-	ESFTE
INA	-	-	-	-	PCFTR



FLE

SNR	UCFLE	USFLE	UKFLE..H	EXFLE	ESFLE
INA	RCJTY	PCJTY	-	RCJT..N	PCJT..N
SKF	FYTB..TF	-	FYTJ..KF	FYTB..WF	FYTB..FM
RHP	SFT	SFT..A	MSFT..K	SFT..DEC	SFT..EC



FL

SNR	UCFL	USFL	UKFL..H	EXFL	ESFL
NSK	UCFL	UBFL	UKFL.. + H23..	EWFL	-
ASAHI	UCFL	BFL	UKFL..+ H	-	KHFL
NTN	UCFL..D1	-	UCFL..D1	UELF..D1W3	-
KOYO	UCFL	-	UKFL	-	SAFL..FM



- (F) Paliers auto-aligneurs en fonte grise
 (GB) Grey cast iron housings
 (D) Grauguss Gehäuselager
 (E) Gamma de soportes auto-alineantes
 (I) Supporti con corpo in ghisa o lamiera d'acciaio
 (P) Gama de mancais auto-alinháveis

**FLZ**

SNR	UCFLZ	USFLZ	UKFLZ..H	EXFLZ	ESFLZ
INA	-	-	-	RCJTZ	-

FD

SNR	-	USFD	-	-	ESFD
INA	-	FLCTEY	-	-	GLCTE
NSK	-	UBFD	-	-	ENFD
ASAHI	-	BLCTE	-	-	ENFD
NTN	-	ASFD	-	-	-
RHP	-	LFTC..A	-	-	LFTC..EC

**FAE**

SNR	-	USFAE	-	-	ESFAE
INA	-	-	-	-	PSFT

**FA**

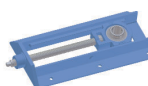
SNR	UCFA	USFA	UKFA..H	EXFA	ESFA
NSK	UCFA	-	-	-	-
ASAHI	UCFA	-	-	-	-
NTN	UCFA..D1	-	-	-	-
KOYO	UCFA	-	-	-	-

**T**

SNR	UCT	UST	UKT..H	EXT	EST
INA	RTUEY	PTUEY	-	RTUE	PTUE
SKF	TUJ..TF	-	-	-	TU..FM
RHP	ST	ST..A	MST..K	ST..DEC	ST..EC
NSK	UCT	-	UKT.. + H23..	EWT	-
ASAHI	UCT	-	UKT.. + H	-	KHT
NTN	UCT..D1	-	UKT..D1,H23..	UULT..D1W3	-
KOYO	UCT	-	UKT	-	-

**T+WB**

SNR	UCT+ WB	UST+ WB	UKT..H+WB	EXT+ WB	EST+ WB
NSK	UCT.. + WB	-	-	-	-
ASAHI	UCT.. + WB	-	-	-	-





- (F) Paliers auto-aligneurs en fonte grise
- (GB) Grey cast iron housings
- (D) Grauguss Gehäuselager
- (E) Gamma de soportes auto-alineantes
- (I) Supporti con corpo in ghisa o lamiera d'acciaio
- (P) Gama de mancais auto-alinháveis



SP

SNR	UCSP	USSP	UKSP..H	EXSP	ESSP
RHP	BT	BT..A	-	-	BT..EC



C

SNR	UCC	USC	UKC..H	EXC	ESC
NSK	UCC	-	UKC.. + H23..	-	-
ASAHI	UCC	-	-	-	-
NTN	UCC..D1	-	UKC..D1,H23..X	UELCL..D1W3	-
KOYO	UCC	-	UKC	-	-



EHE

SNR	UCEHE	USEHE	UKEHE..H	EXEHE	ESEHE
RHP	SCH	-	-	-	-
INA	-	PHEY	-	RHE	PHE
NSK	UCEH	-	-	-	-
ASAHI	UCECH	-	-	-	-
NTN	UCHB..D1	-	-	-	-



- (F) Paliers auto-aligneurs en tôle d'acier
 (GB) Stamped steel housings
 (D) Stahlblech Gehäuselager
 (E) Soportes de chapa
 (I) Supporti in lamiera d'acciaio
 (P) Mancais em chapa de aço

**PP**

SNR	USPP	ESPP
INA	PBY	PB
SKF	P..RM	P..FM
RHP	-	LPB..EC
ASAHI	BPP..Z2	KHPP..Z2
NTN	ASPP	AELPP..W3
KOYO	SBPP	SAPP..FM

**PF**

SNR	USPF	ESPF
INA	RAY	RA
SKF	PF..RM	PF..FM
RHP	SLFE..A	SLFE..EC
NSK	UBPF	ENPF
ASAHI	PBF	KHPF
NTN	ASPF	AELPF..W3
KOYO	SBPF	SAPF..FM

**PFL**

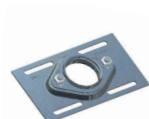
SNR	USPFL	ESPFL
INA	RATY	RAT
SKF	PFT..RM	PFT..FM
RHP	SLFL..A	SLFL..EC
NSK	UBPFL	ENPFL
ASAHI	BPFL	KHPFL
NTN	ASPFL	AELPFL
KOYO	SBPFL	SAPFL..FM

**PFT**

SNR	USPFT	ESPFT
INA	RATRY	RATR
SKF	PFD..RM	PFD..FM
RHP	SLFT..A	SLFT..EC
ASAHI	BPFT	-

**PFE**

SNR	USPFE	ESPFE
INA	-	MSTU

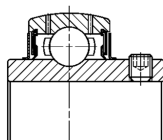




- (F) Paliers auto-aligneurs en acier inoxydable
- (GB) Stainless steel ball bearing units
- (D) Nichtrostende Gehäuselager
- (E) Soportes en acero inoxidable
- (I) Supporti in acciaio inox
- (P) Mancais em aço inoxidável

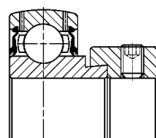
SUC

SNR	SUC
ASAHI	MUC
NTN	F-UC200D1/LP03
DODGE	SCEZ



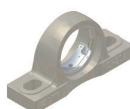
SES

SNR	SES
ASAHI	-
NTN	-
DODGE	-



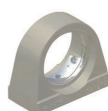
SP

SNR	SUCP	SESP
ASAHI	MUCP	-
NTN	F-UCPM	-
DODGE	P2B-SCEZ	-



SPA

SNR	SUCPA	SESPA
ASAHI	MUCPA	-
NTN	-	-
DODGE	-	-



SF

SNR	SUCF	SESF
ASAHI	MUCF	-
NTN	-	-
DODGE	F4B-SCEZ	-



SFL

SNR	SUCFL	SESFL
ASAHI	MUCFL	-
NTN	F-UCFM	-
DODGE	F2B-SCEZ	-



ST

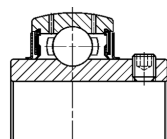
SNR	SUCT	SEST
ASAHI	MUCT	-
NTN	-	-
DODGE	-	-



- (F) Paliers auto-aligneurs thermoplastiques
 (GB) Thermoplastic self-aligning bearing units
 (D) Thermoplastik Gehäuselager
 (E) Soportes autoalineantes termoplásticos
 (I) Supporti termoplastici
 (P) Mancais termoplásticos

MUC..FD

SNR	MUC..FD
SKF	YAR2..-2RF/HVGFA
INA	GYE..KRRB VA
NSK - RHP	J10..-..GCR
NTN	F-UC2..D1/LP03

**GNP**

SNR	GNP
SKF	SYK..TH/GFA
INA	RASEY..TN VA
NSK - RHP	PNP..CR
NTN	F-UCPR2../LP03

**GSF**

SNR	GSF
SKF	FYK..TH/GFA
INA	RCJY..TN VA
NSK - RHP	PSF..CR
NTN	...

**GSFT**

SNR	GSFT
SKF	FYTBK..TH/GFA
INA	RCJTY..TN VA
NSK - RHP	PSFT..CR
NTN	F-UCFLR2../LP03

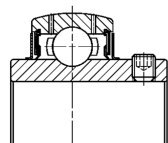




(F) Roulements-inserts
 (GB) Bearing inserts
 (D) Lagereinsätze
 (E) Rodamientos
 (I) Cuscinetti per supporti
 (P) Rolamento de chumaceira

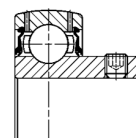
UC..G2

SNR	UC..G2
INA	GYE..KRRB
SKF	YAR..2F
RHP	10..G
NSK	UC
ASAHI	UC
NTN	UC..D1
KOYO	UC



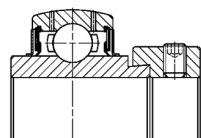
US..G2

SNR	US..G2
INA	GAY..NPPB
SKF	YAT
RHP	12..G
NSK	UB
ASAHI	B
NTN	AS
KOYO	SB



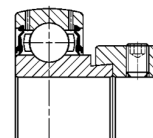
EX..G2

SNR	EX..G2
INA	GE..KRRB
SKF	YEL..-2F
RHP	10..DECG
NSK	EW
ASAHI	-
NTN	UEL..D1W3
KOYO	NA



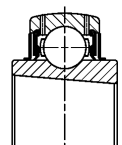
ES..G2

SNR	ES..G2
INA	GRAE..NPPB
SKF	YET
RHP	12..ECG
NSK	EN
ASAHI	KH..+ER
NTN	AEL..W3
KOYO	SA



UK..G2H

SNR	UK..G2H
INA	-
SKF	YSA..-2FK
RHP	10..KG
NSK	UK..+H23..
ASAHI	UK..+H23..
NTN	UK..D1, H23..X
KOYO	UK



Notes



Europe

FRANCE - EUROPE

SNR Paris 40, rue Jean Bleuzen
B.P. 49
92174 Vanves Cedex
Tél. 01 40 93 66 00
Fax. 01 40 93 66 10

SNR Logistique 9, avenue Léon Harmel
92160 Antony
Tél. 01 46 11 66 50
Fax. 01 46 11 66 66

SNR Bordeaux 1, rue du Golf - B.P. 173
33708 Merignac Cedex
Tél. 05 56 34 69 80
Fax. 05 56 34 69 81

SNR Lyon Europe* Le Florentin - 71, chemin
du Moulin Carron - B.P. 8
69570 Dardilly
Tél. 04 78 66 68 00
Fax. 04 78 66 68 20

SNR Nancy Europe* 3, allée Forêt de la Reine
Parc technologique Brabois
54500 Vandœuvre
Tél. 03 83 44 64 00
Fax. 03 83 44 02 31

DEUTSCHLAND

SNR WÄLZLAGER GMBH www.snr.de
40472 Düsseldorf Wahlerstraße 6
40437 Düsseldorf
Postfach 33 04 10
Tél. (0211) 6 58 06-0
Fax. (0211) 6 58 88 86

33719 Bielefeld Friedrich-Hagemann-Str.66
33701 Bielefeld
Postfach 17 01 45
Tél. (0521) 9 24 00-0
Fax. (0521) 9 24 00 90

70597 Stuttgart Tränkestraße 7
70574 Stuttgart
Postfach 70 04 16
Tél. (0711) 9 00 64-0
Fax. (0711) 9 00 64 99

ITALIA

SNR Italia Milano Via Keplero, 5
20019 Settimo
Milanese (MI)
Tél. (02) 33 55 21
Fax (02) 33 50 06 56

Bologna Via E.Zago, 2/2
40128 Bologna
Tél. (051) 36 79 46
(051) 36 29 78
Fax (051) 36 85 38

ESPAÑA - PORTUGAL

SNR Rodamientos Ibérica S.A.
Madrid C/ Llanos de Jerez, 22
Polígono Industrial
28820 Coslada
Tél. 91 671 89 13
Fax. 91 673 65 48

***EUROPE** (Subsidiaries excepted)
SNR Nancy - Europe : Benelux - Suisse - Autriche - U.K.
SNR Lyon - Europe : Other Countries Fax. 04 78 66 68 21

Amériques / Americas

USA

SNR Bearings USA www.snrbearings.com
Atlanta 4600 K Highlands Pkwy
Smyrna, G.A. 30082
Tél. (770) 435-2818
(800) 232-1717
Fax. (800) 742-5215

AMERICA LATINA

SNR Argentina
Buenos Aires Viamonte 1145 - Piso 11
1053 Buenos Aires
Tél. (54) 11-4 372-1272
Fax. (54) 11-4 372-0088

Autres pays / Other countries

SNR Intermondial (Overseas)

Annecy 18, rue du Val-Vert
74600 Seynod
France
Tél. (33) 4 50 65 96 00/01/02
Fax. (33) 4 50 65 96 15

MAROC

SNR Maroc
Casablanca 73, Bd Moulay Slimane
Ain Sebaâ CASABLANCA
B.P 15873 CASA-PRINCIPAL
e-mail : info@snr.ma
Tél. (212) 22 66 76 80
Fax. (212) 22 66 51 66



Siège social : Rue des Usines - 74000 Annecy - FRANCE

RCS Annecy B 325821072 - Code NAF 291H

<http://www.snr.fr>